

**KEITH® V-FLOOR® Systems can move nearly any bulk material, enhancing the trailers' backhaul potential.**

WALKING FLOOR® technology is a horizontal loading and unloading system. While in motion, the floor slats remain horizontal, reciprocating sequentially and then in unison to convey the material.

**Backhaul**

- Be profitable coming and going with a V-FLOOR® system.
- Unloads abrasive materials, in addition to standard MSW loads.
- Leak resistant design allows for higher moisture loads.

**V-SWEEP™ System**

Designed for use with the V-FLOOR® products, the V-SWEEP™ system can be used to unload difficult, high-density materials. The unique design enables the V-SWEEP™ system to form to the flooring, cleaning material out as the trailer unloads. Ideal for aggregate, asphalt, glass and building rubble.



**Enhance your V-FLOOR® equipped trailer with a V-SWEEP™ System.**

©2012 KEITH Mfg. Co. All Rights Reserved. KEITH, KEITH logo and WALKING FLOOR are registered trademarks of KEITH Mfg. Co. Equipment manufactured by KEITH Mfg. Co. is protected by numerous patents both domestic and foreign. Manufactured under license.

**The KEITH® Promise:**

**“The continuous pursuit of excellence in KEITH products and customer service.”**



[www.keithwalkingfloor.com](http://www.keithwalkingfloor.com)

**KEITH Mfg. Co.**  
World Headquarters  
Madras, OR 97741  
(800) 547-6161  
(541) 475-3802  
sales@keithwalkingfloor.com

**WALKING FLOOR International/Canada**  
(800) 514-6085  
(519) 756-9178  
canadasales@keithwalkingfloor.com

**WALKING FLOOR International México**  
(+52) (33) 3616 5079  
kmc\_mexico@keithwalkingfloor.com

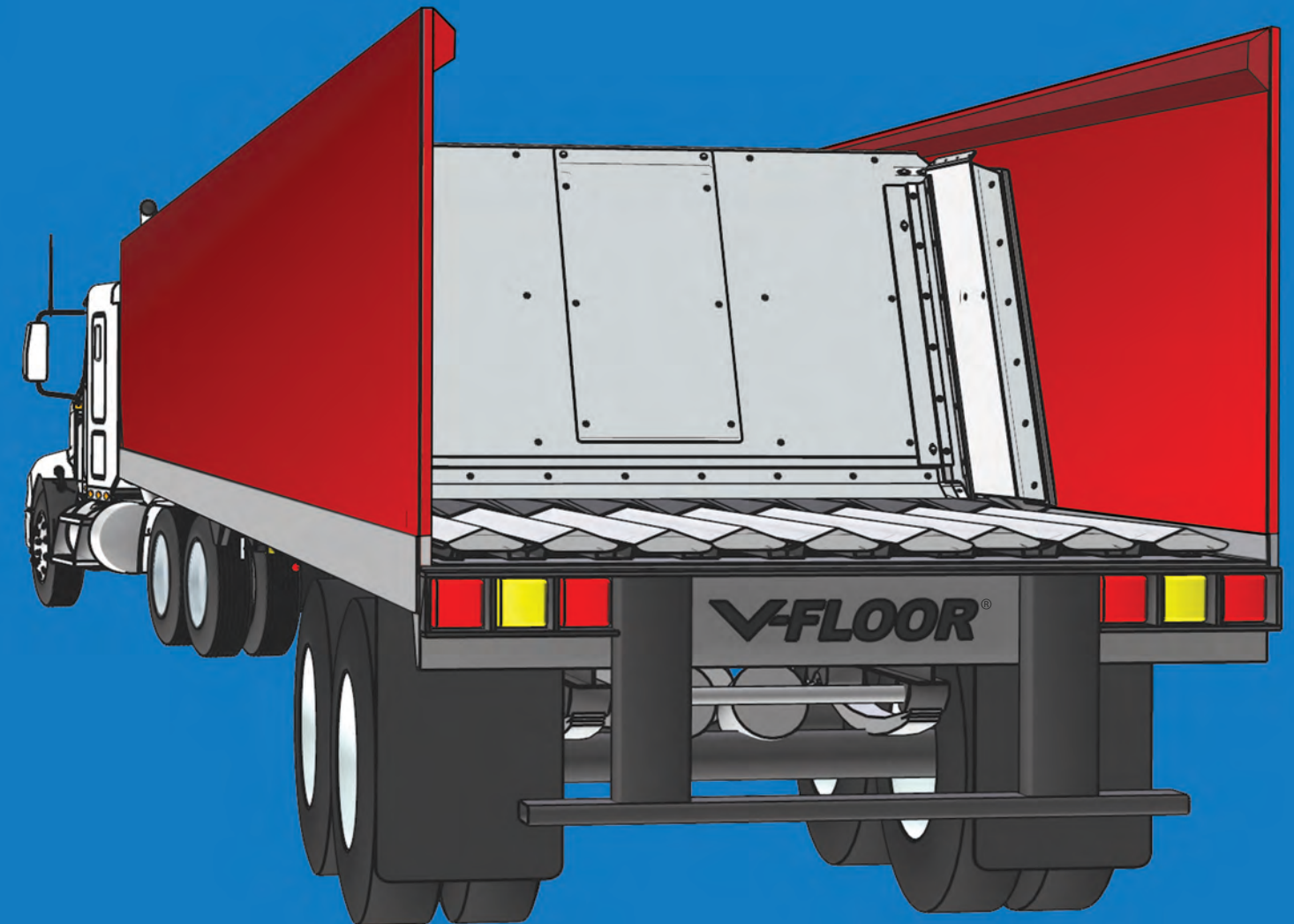
**KEITH WALKING FLOOR Australia**  
(+61) 395622190  
ausales@keithwalkingfloor.com

**KEITH WALKING FLOOR Europe**  
The Netherlands  
(+31) 342 422007  
eurosales@keithwalkingfloor.com

**KEITH MOVING FLOORS International, Inc.**  
Sucursal en España  
(+34) 973 732778  
serviciopostventa@keithwalkingfloor.com

# SUPERIOR BY DESIGN

WALKING FLOOR® Only by KEITH®



# V-FLOOR®

- Impact Resistant
- Full Length Bearing Support
- No Floor Seal



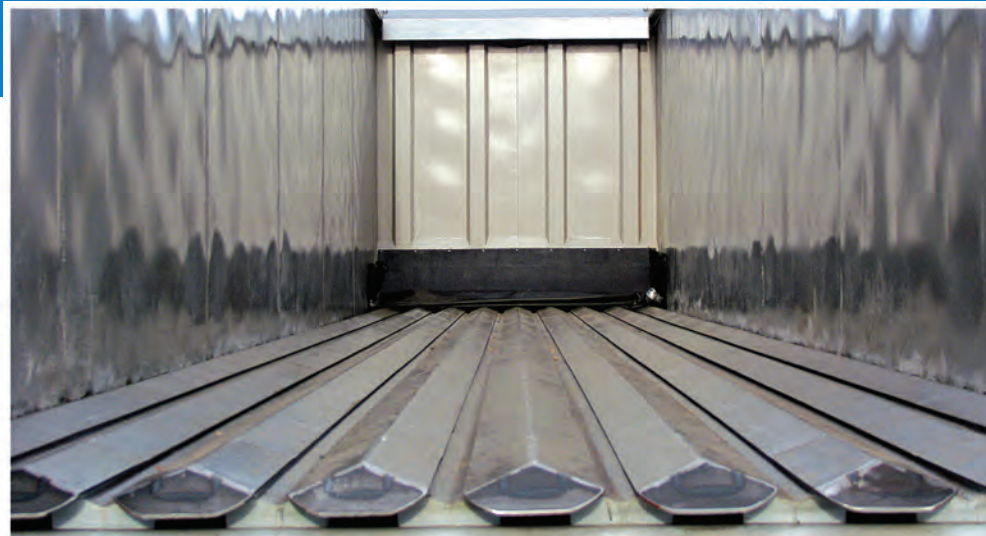
[www.keithwalkingfloor.com](http://www.keithwalkingfloor.com)  
[www.v-floor.com](http://www.v-floor.com)

## KEITH® V-FLOOR® Designed to Last

With the option of floor slats constructed of special Hi-Wear steel, the KEITH V-FLOOR® unloading system is specially designed to handle difficult loads. The unique sub-deck, bearing, and slat configuration absorbs load impact.

The rugged V-FLOOR® slat is teamed with the KEITH® V-Drive, an evolution of the reliable and proven RUNNING FLOOR II® drive technology. The double-rod arrangement of the V-Drive hydraulic system divides the unloading forces between both ends of the drive frame, distributing force and allowing for faster unloading times.

When installed in a trailer, the V-FLOOR® unloader provides safe, efficient and versatile horizontal unloading. Like all WALKING FLOOR® systems, the V-FLOOR® unloader requires minimal maintenance and is easy to operate.



### KEITH® V-FLOOR® 9-Slat System

#### V-9 System

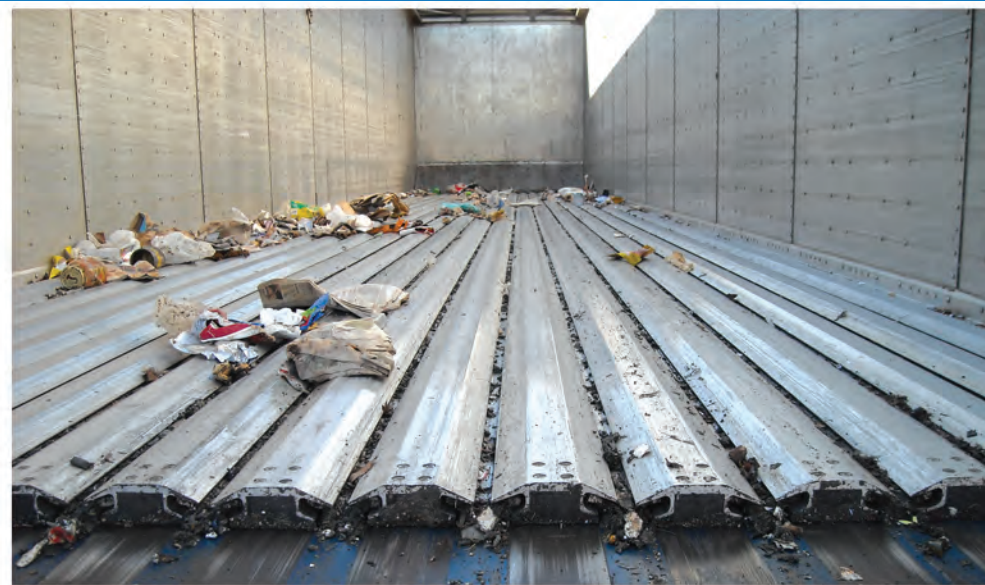
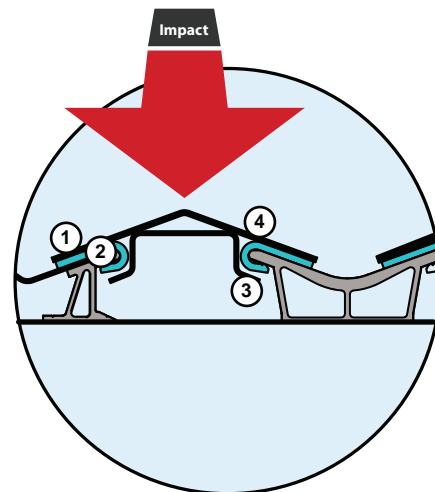
The toughest WALKING FLOOR unloader ever made.

The V-9 system is specially designed to handle difficult loads. Floor slat options include a variety of steel and aluminum profiles.

- Aluminum V-9 slats are designed for high impact and are typically used for MSW, recyclables and light construction & demolition.
- Steel V-9 slats are designed for high impact and abrasion and are used in heavy construction & demolition, scrap metal, aggregate and asphalt.

#### Impact Absorbing Design

1. Slat is available in steel or aluminum.
2. J-Bearing provides full-length bearing support.
3. Slat, bearing and sub-deck combination designed for maximum impact.
4. The V-FLOOR® takes advantage of a design incorporating a triangle shape and wings. This provides excellent rigidity and strength while maintaining the ability to absorb the energy of impact loads.



### KEITH® V-FLOOR® 18-Slat System

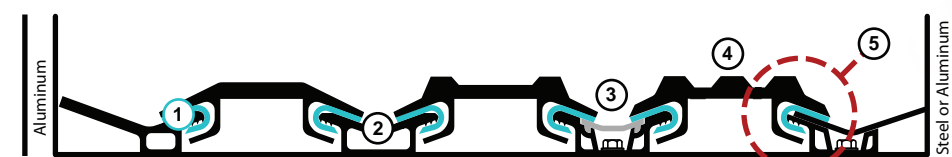
#### V-18 System

The most versatile WALKING FLOOR unloader ever made.

The aluminum V-18 slat is ideal for materials that do not require the more robust V-9 system. It is designed to haul multiple products and improve backhaul opportunities.

- Used for MSW, biomass, and light to moderate construction & demolition.
- Available in thicknesses ranging from 3/16" to 1/2" triple ridge.

#### V-FLOOR® Design Features



1. Full length bearing support.
2. Sub-deck design provides superior hold down and leak-resistance.
3. Bolt-down sub-deck available.
4. IMPACT™ slat series for high impact applications.
5. Unique V-FLOOR® design provides superior impact resistance over flat floors.

## KEITH® V-FLOOR® Key Benefits

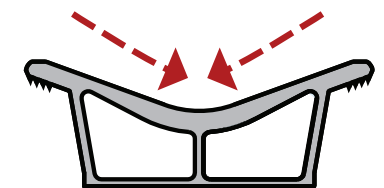
- Unique slat design absorbs high impacts.
- Sub-deck provides full length floor hold down.
- No floor seal.
- Superior leak resistance compared to standard flooring.
- Ideal for a wide variety of backhails.
- Low maintenance and easy to operate, with low power requirements.

#### V-9 only:

- Optional designs for high temp applications, such as asphalt delivery and soil remediation.
- Steel option floor slat for highly abrasive loads.

## Trough Design

The unique design of the trough uses gravity to move fines and other material to the bottom of the trough.



**The Toughest WALKING FLOOR® Unloader Ever Made**



1. Download i-nigma to your mobile.
2. Run i-nigma on your phone.
3. Photograph the code above to open the link.